

# F-18 Hornet Flight Model in FF5

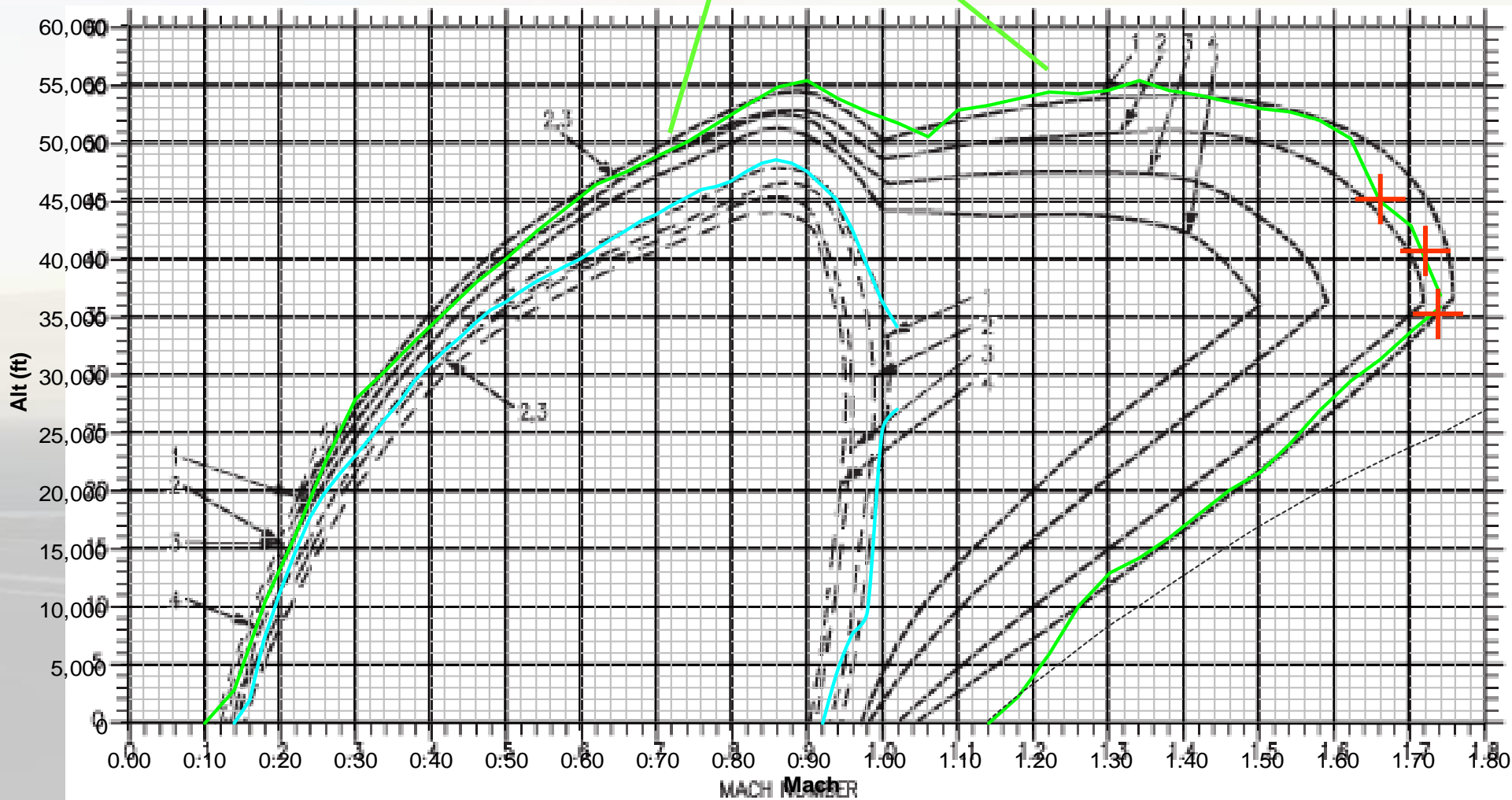
Compare computed FF5's  
Hornet performance  
with Real Life Data



RL data extracted from  
A1-F18AC-NFM-210

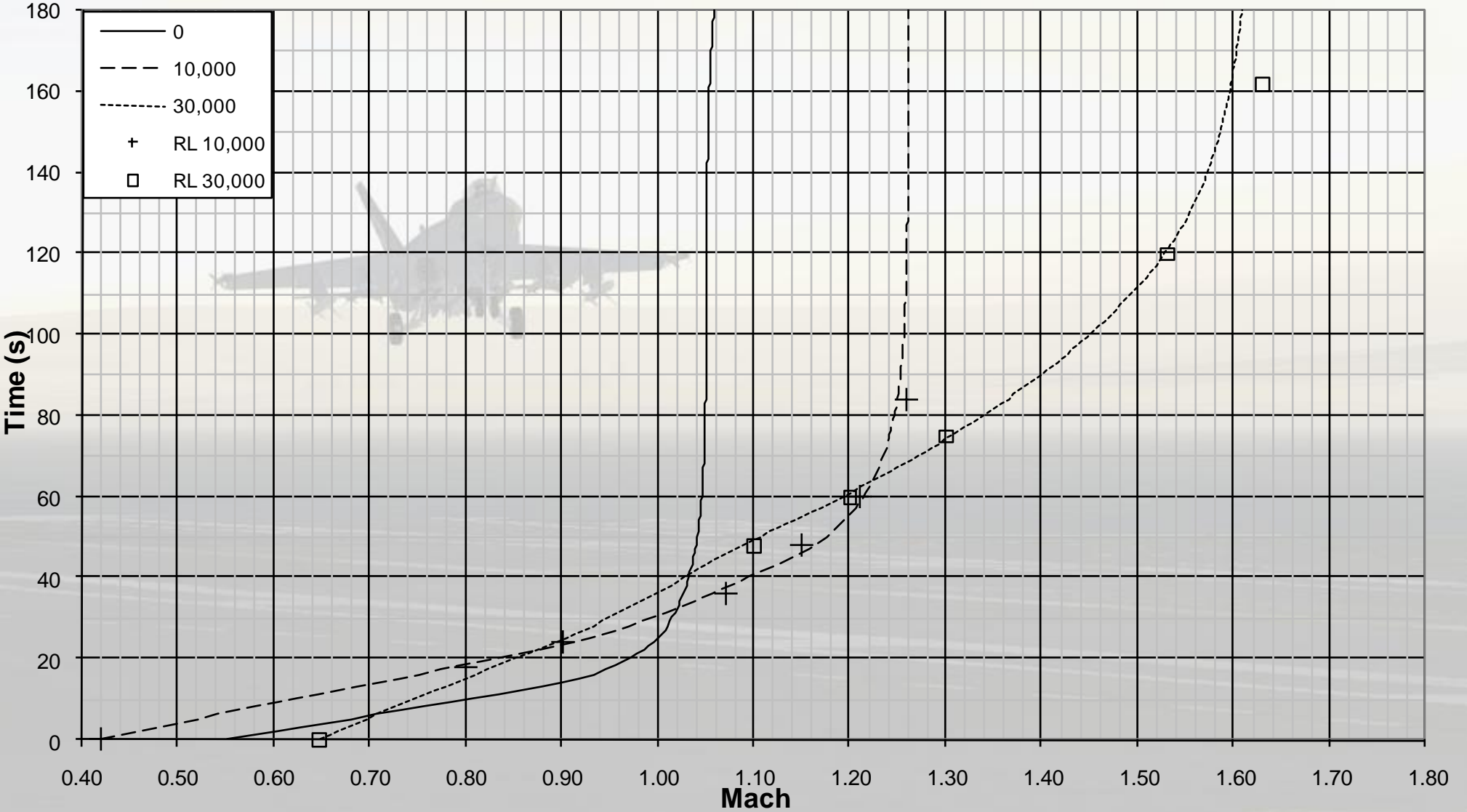
F-18C (F404-GE-402)  
(2) AIM-9 + (2) AIM-7  
60% Fuel Remaining  
GW=33,696 lb  
Supposed to fit the (1) curve

The maximum Mach values over  
35,000ft read from Flight  
Envelope diagram (p. 11-274)  
seems too high compared to  
those given p11-290, 294 & 297  
(marked with red cross)



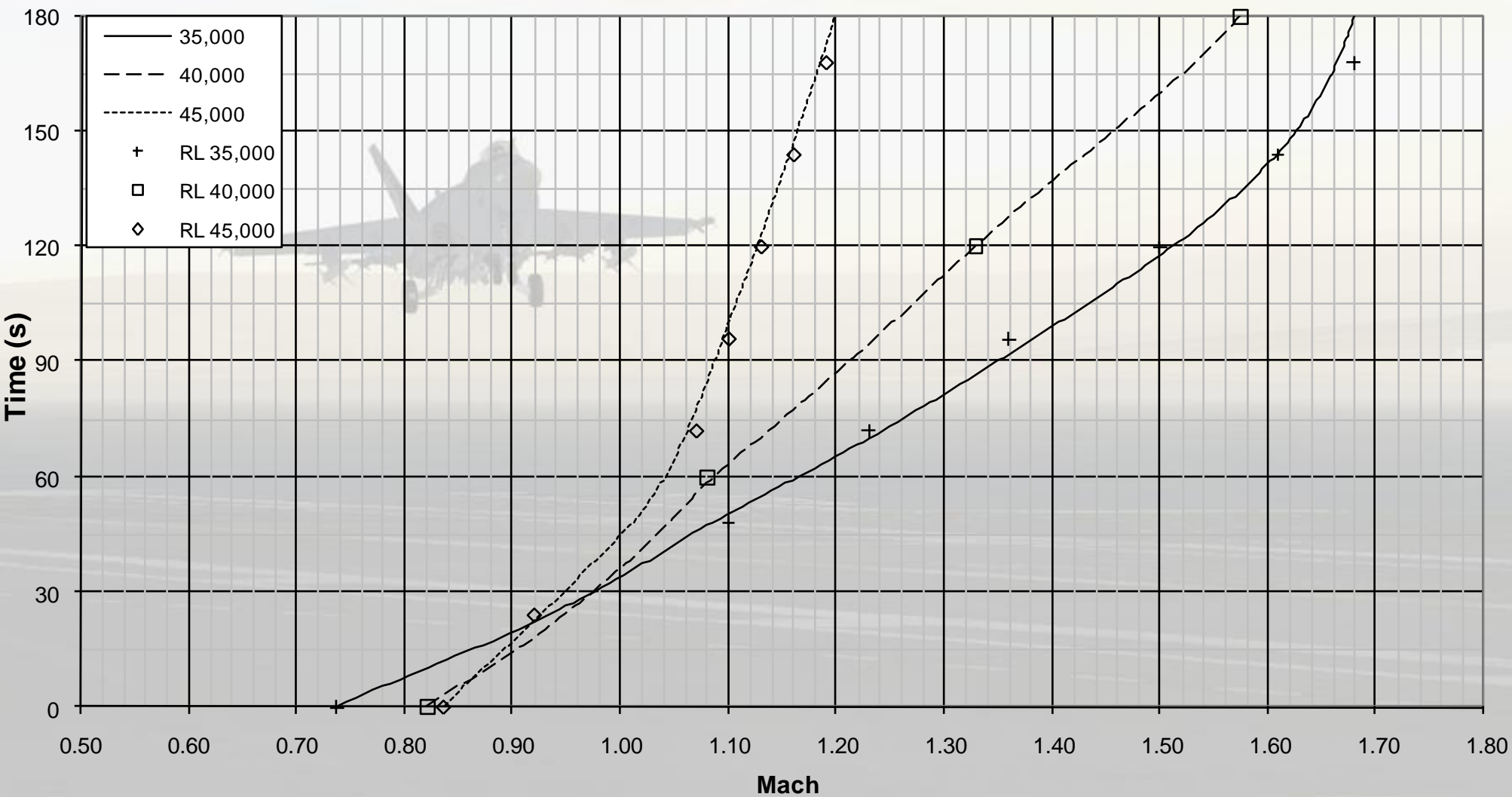
F/A 18-C(F404-GE-402)  
(2) AIM-9 + (2) AIM-7  
60% Fuel Remaining  
GW=33,696 lb

### Acceleration (Max Thrust AB)



# Acceleration (Max Thrust AB)

F/A 18-C(F404-GE-402)  
(2) AIM-9 + (2) AIM-7  
60% Fuel Remaining  
GW=33,696 lb



# F/A-18C Hornet Flight Model in FF5

Computed turn  
performances



F/A 18-C(F404-GE-402)

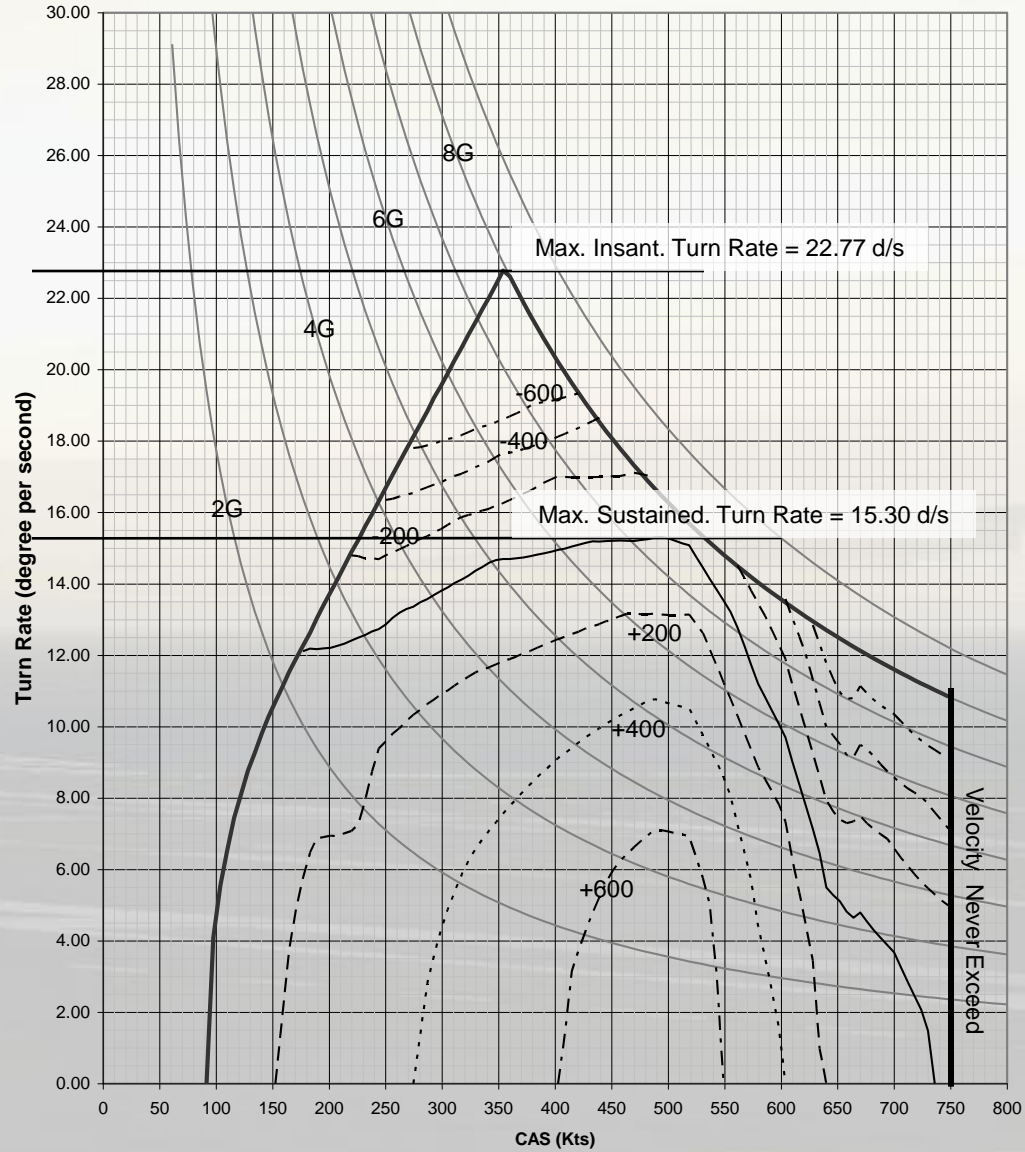
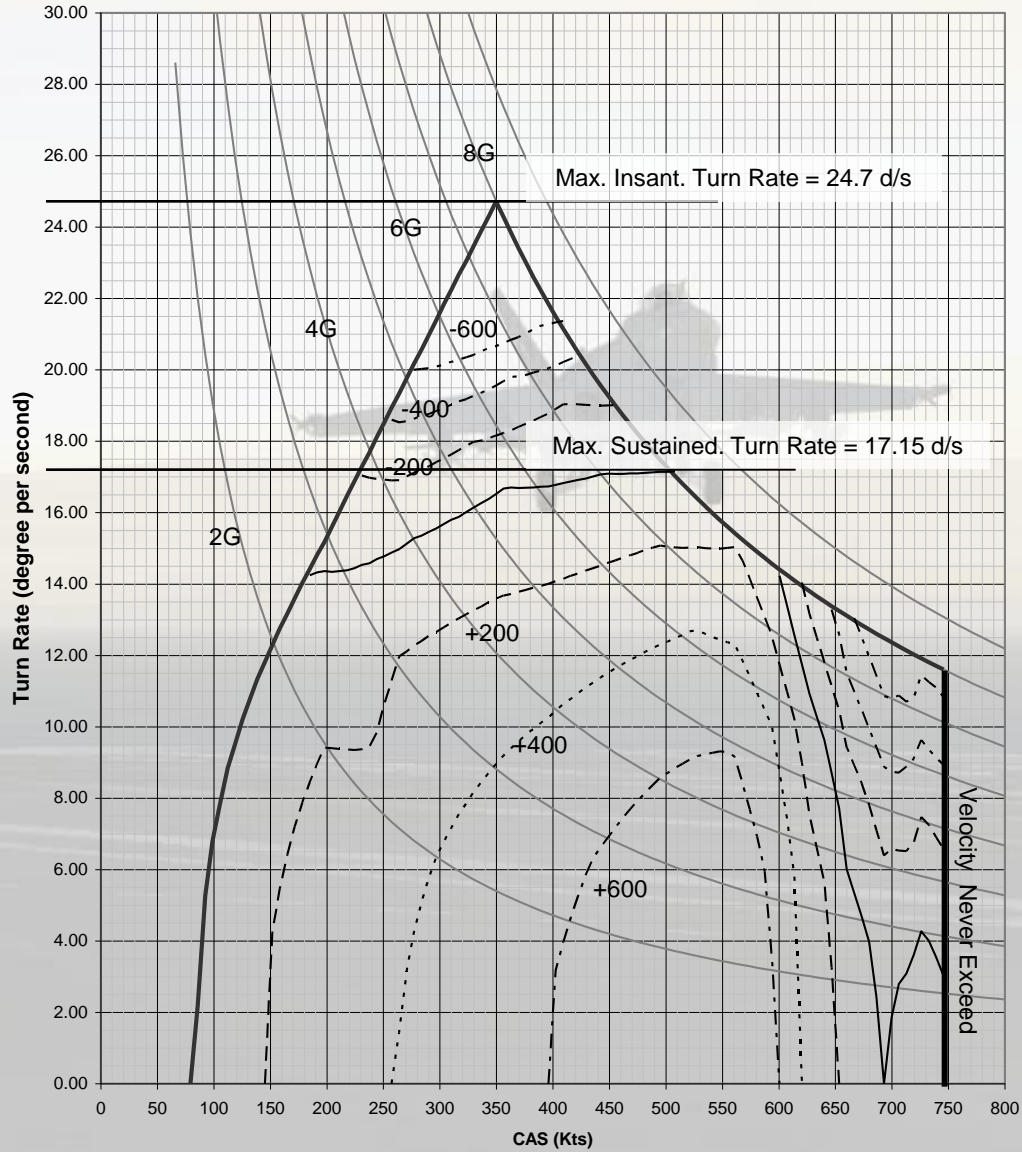
(2) AIM-9 + (2) AIM-7

60% Fuel Remaining

GW=33,696 lb

Sea Level

5,000ft



F/A 18-C(F404-GE-402)

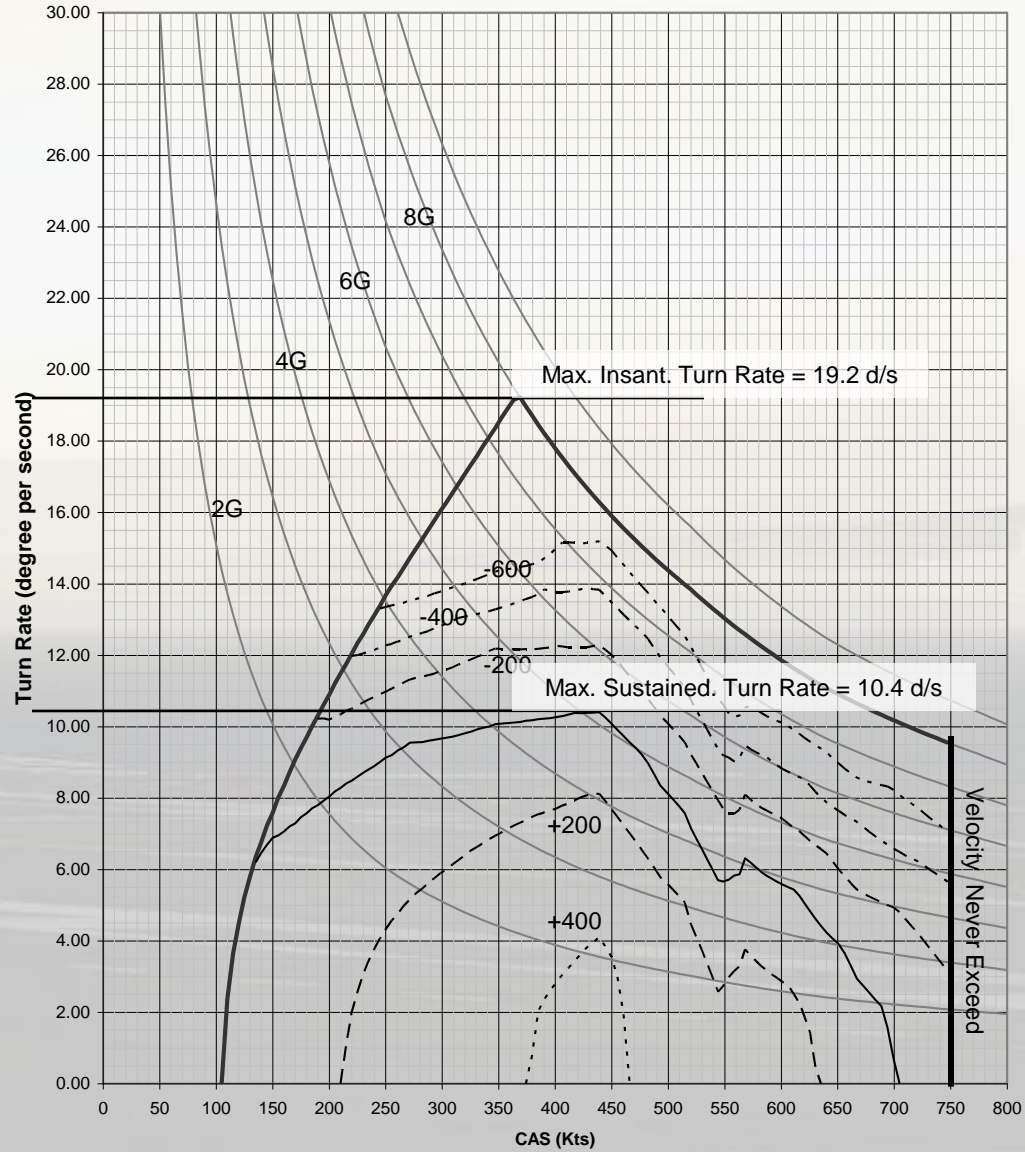
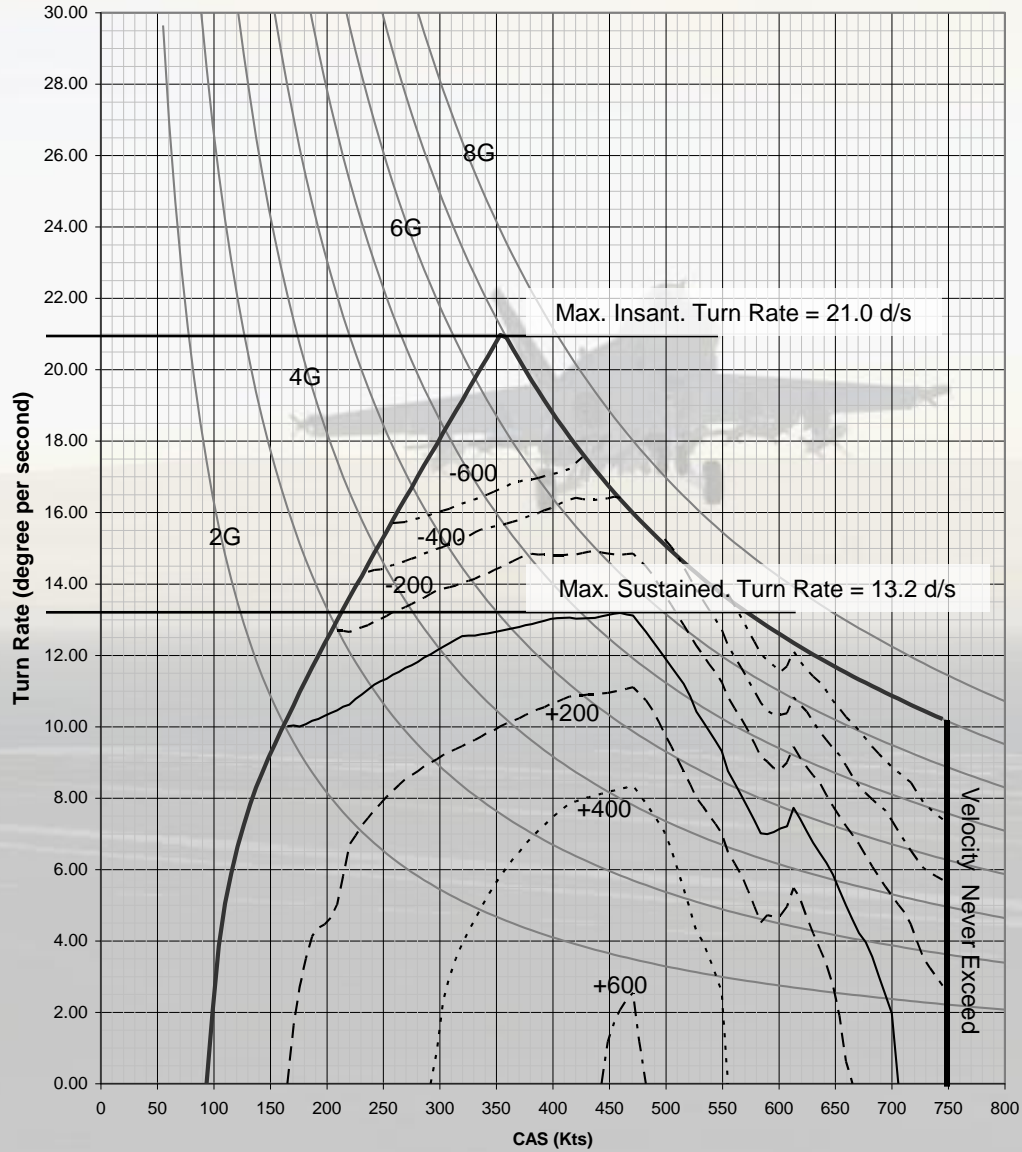
(2) AIM-9 + (2) AIM-7

60% Fuel Remaining

GW=33,696 lb

10,000ft

15,000ft



F/A 18-C(F404-GE-402)

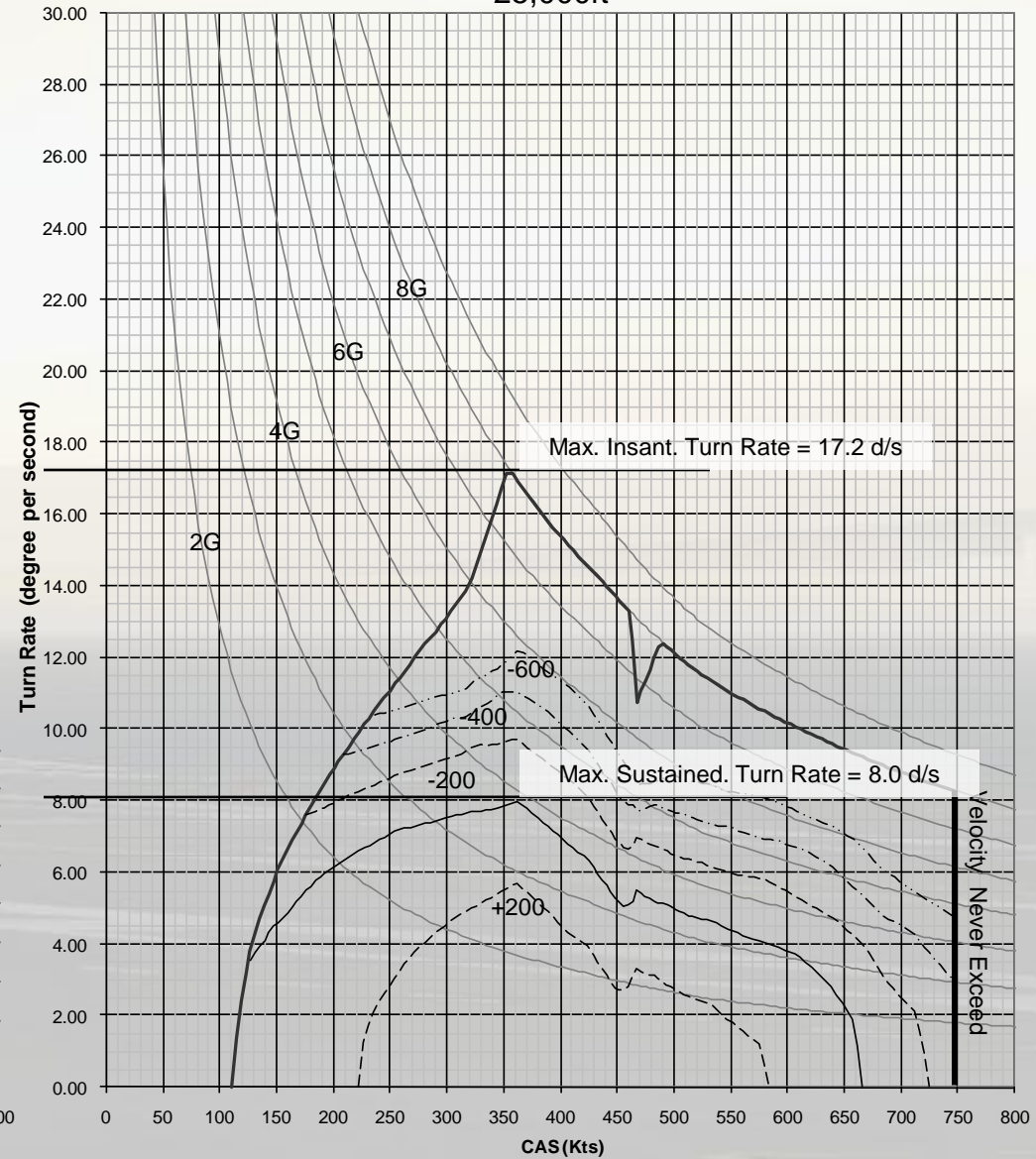
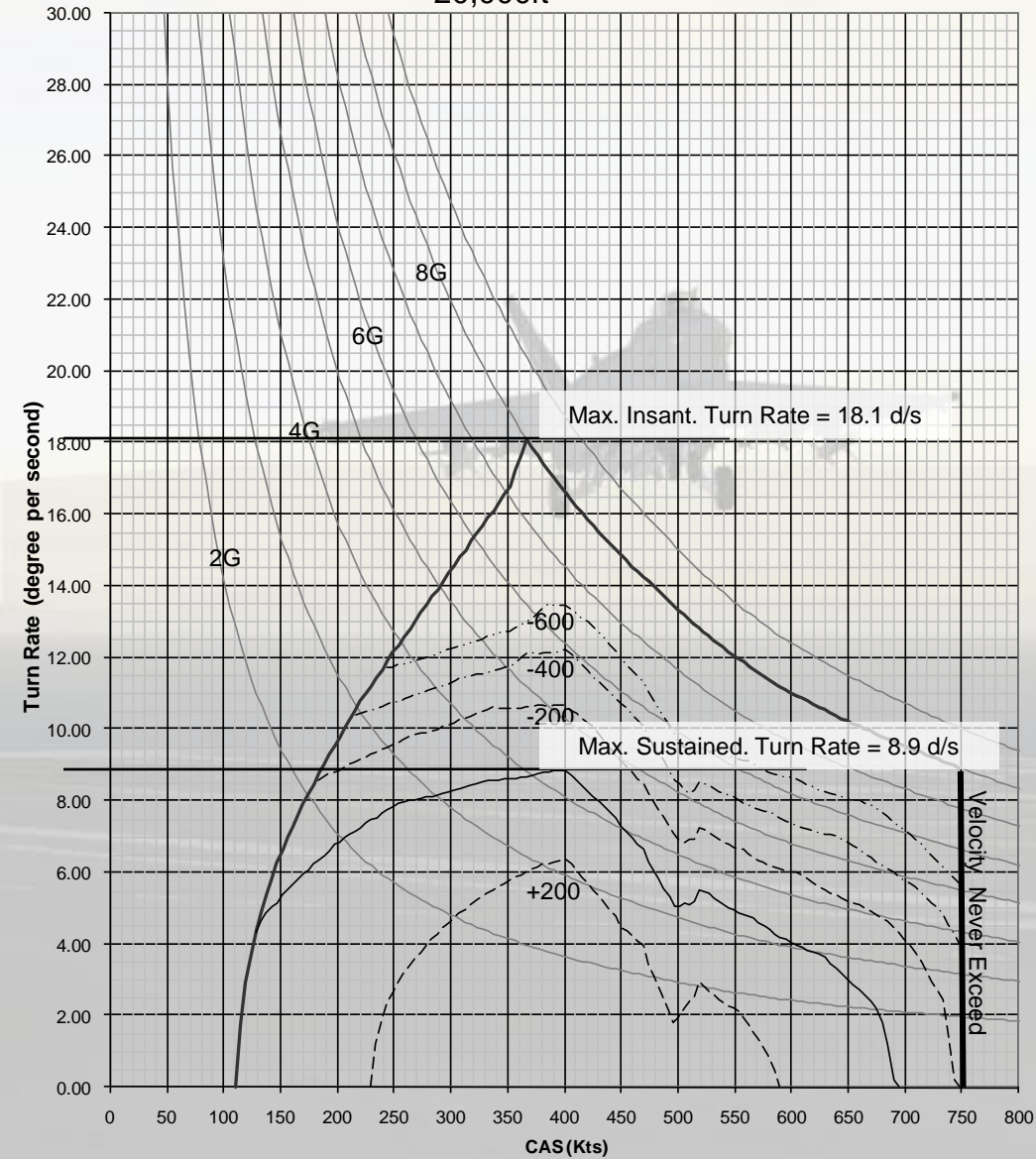
(2) AIM-9 + (2) AIM-7

60% Fuel Remaining

GW=33,696 lb

20,000ft

25,000ft





F/A 18-C(F404-GE-402)

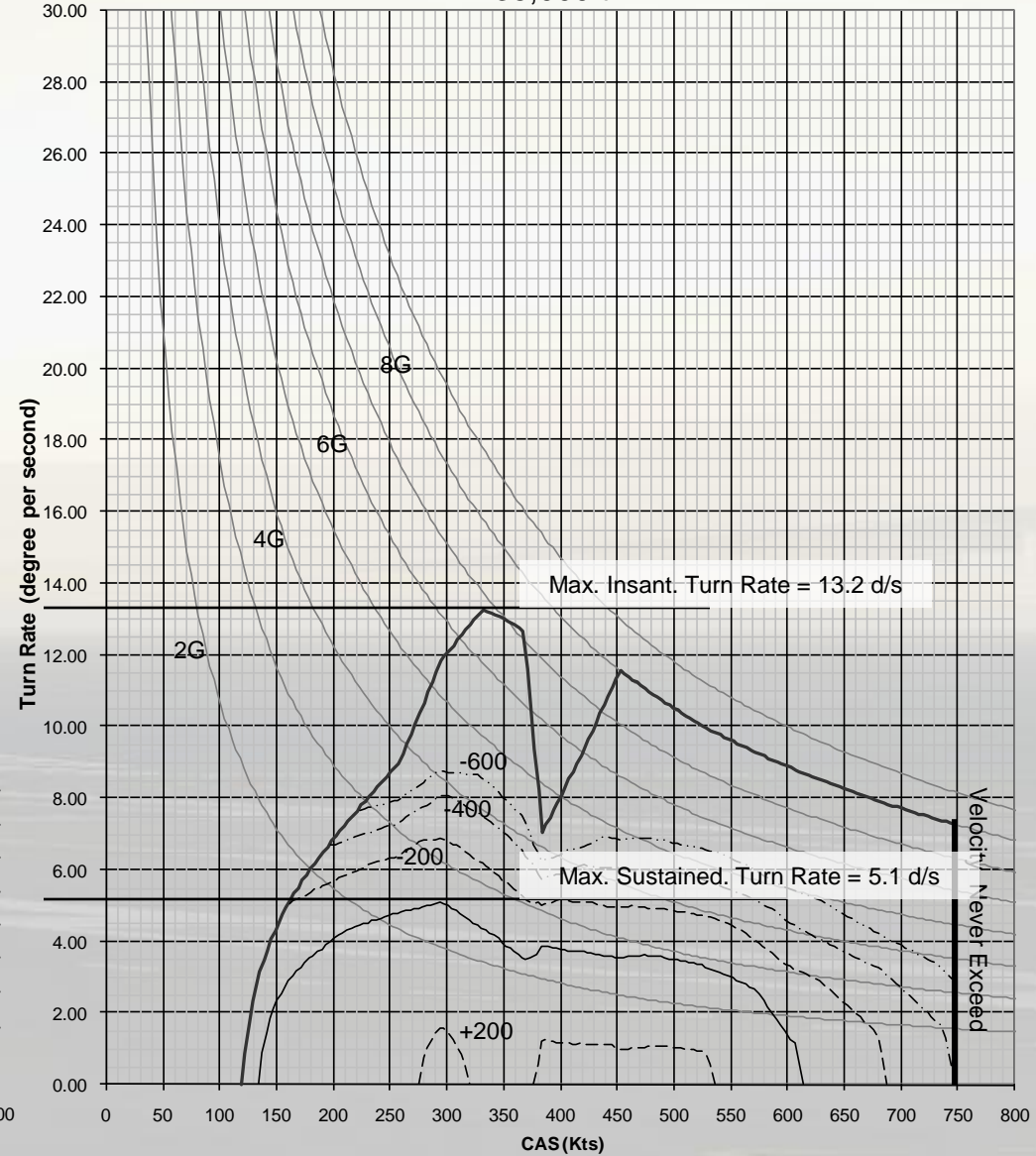
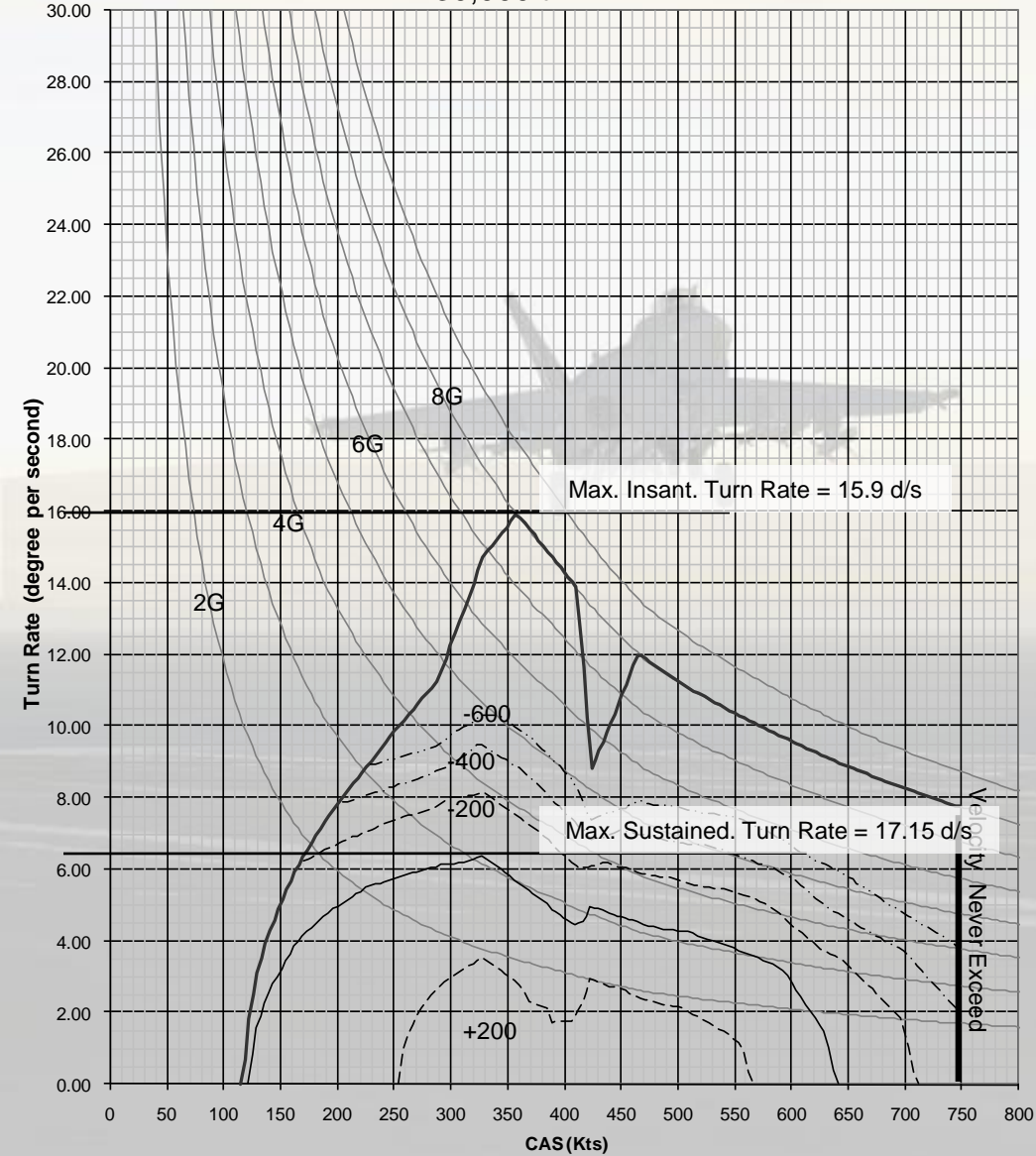
(2) AIM-9 + (2) AIM-7

60% Fuel Remaining

GW=33,696 lb

30,000ft

35,000ft



F/A 18-C(F404-GE-402)

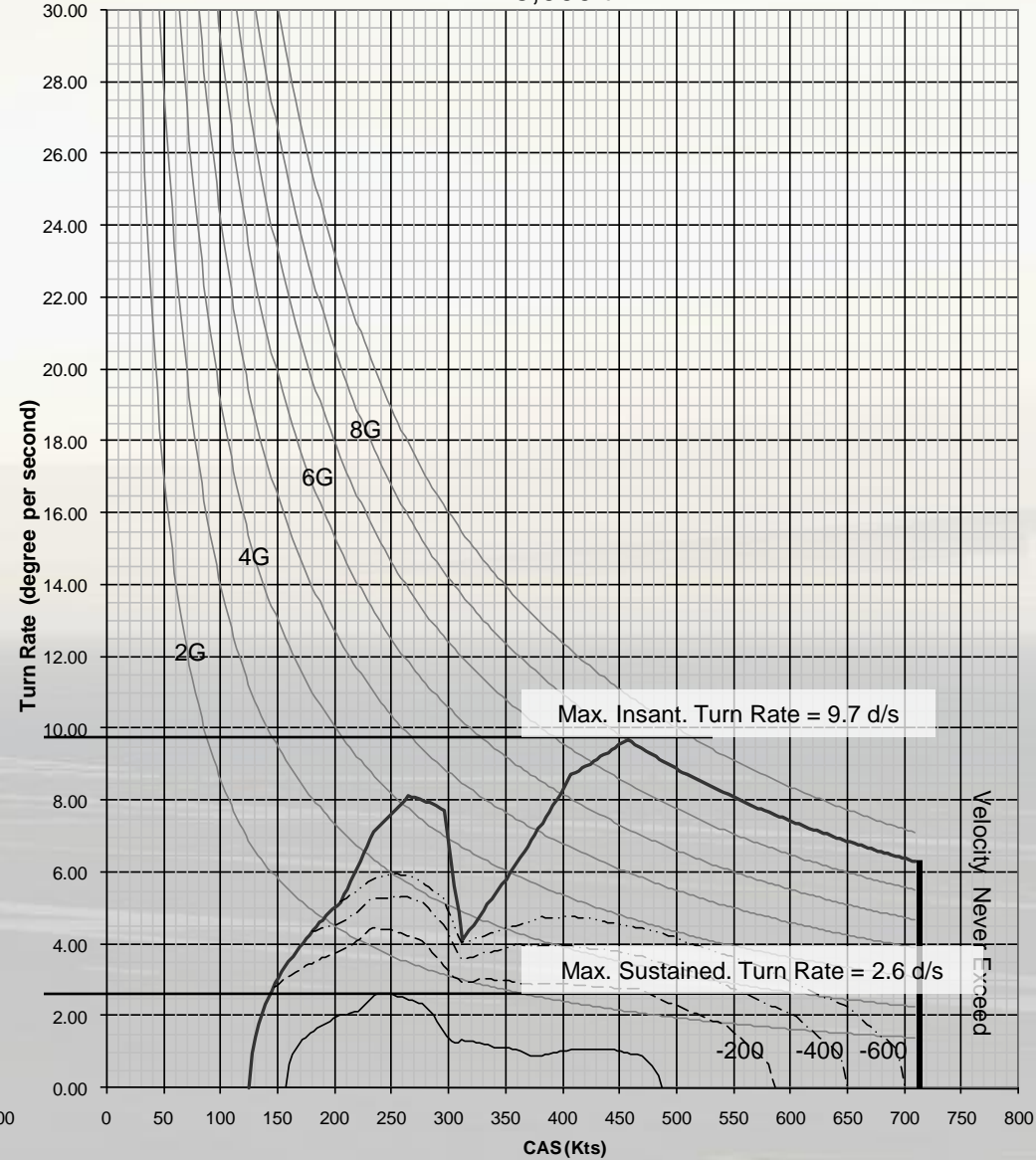
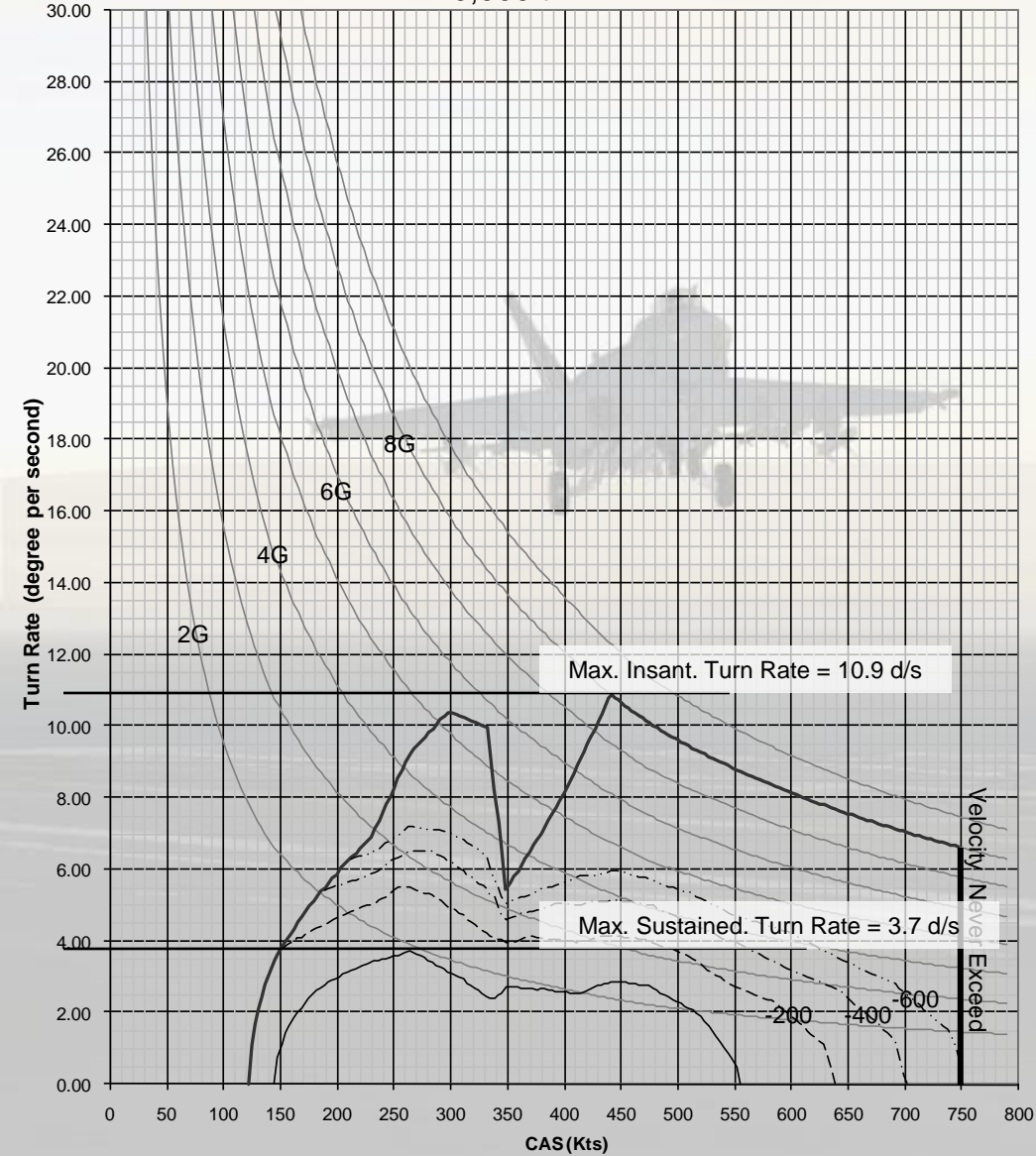
(2) AIM-9 + (2) AIM-7

60% Fuel Remaining

GW=33,696 lb

40,000ft

45,000ft



# F/A-18C Hornet Flight Model in FF5

Computed Climb  
performances







F/A 18-C(F404-GE-402)

(2) AIM-9 + (2) AIM-7

60% Fuel Remaining

GW=33,696 lb

MIL Thrust

### Instantaneous Climb Rate

